

Note:
Dimensions based
on 3/4" thick material

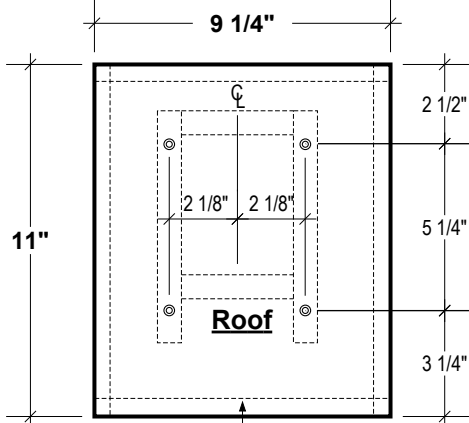
Latch screw
(or nail)
Saw kerfs
or scratches
inside of
door for
bird ladder

1 1/4" to 1 3/8"
Note:
Bend wire
(if needed) to
insure opening
remains in
this range

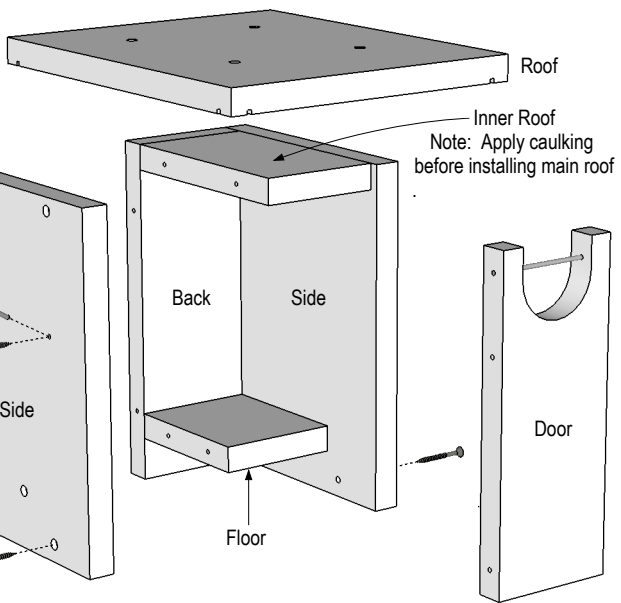
Door Pivot
(each side)

Side View

Front View



Saw kerfs on roof underside
1/2" in from edge x 1/8" deep

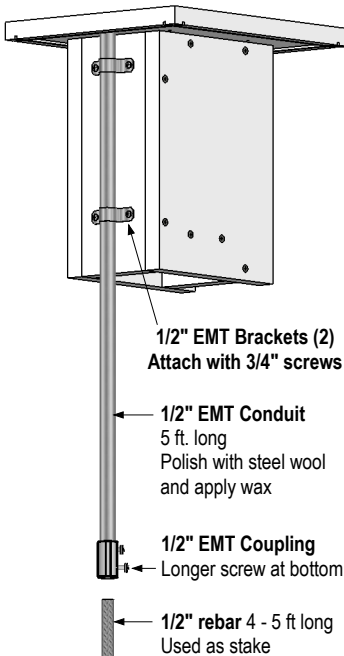


Latch screw
(or nail)
Note: if using
nail, drill hole
down at angle
as shown

Pivot screw
(each side)

Note: Apply caulking
before installing main roof

**Recommended mounting:
Gilbertson Conduit/Rebar
Mounting System**

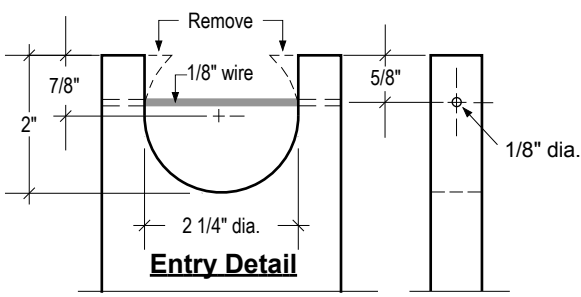


1/2" EMT Brackets (2)
Attach with 3/4" screws

1/2" EMT Conduit
5 ft. long
Polish with steel wool
and apply wax

1/2" EMT Coupling
Longer screw at bottom

1/2" rebar 4 - 5 ft long
Used as stake



Entry Detail

Quan	Material
31"	1 x 4 (3/4" x 3 1/2")
21"	1 x 8 (3/4" x 7 1/4")
11"	1 x 10 (3/4" x 9 1/4")
18	#8 x 1 5/8" exterior wood screws
1	#8 x 1 5/8" Latch screw (or nail)
3 1/2"	1/8" dia. wire (or nail) for entry
1	Conduit/Rebar Mounting System

**Gilwood II
Bluebird Nestbox**

Based on original Gilwood design by
Steve Gilbertson - Aitkin, Mn