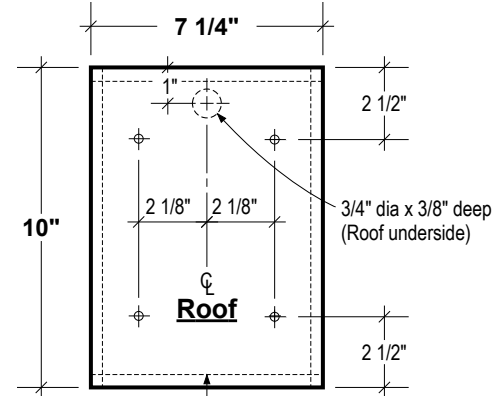
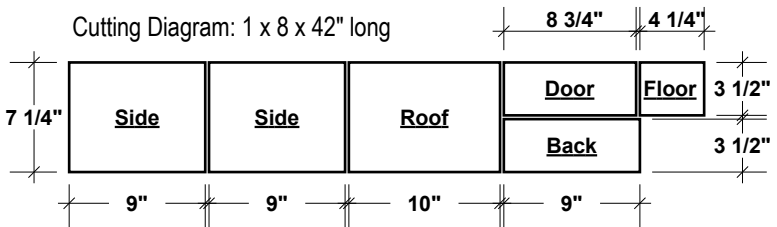
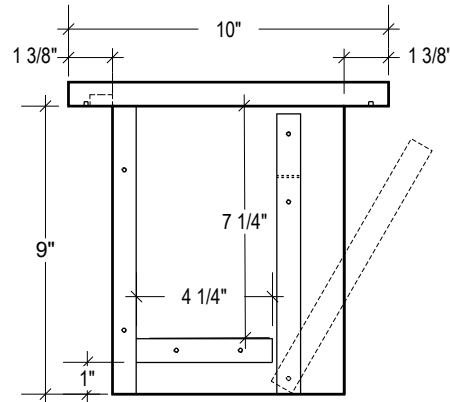


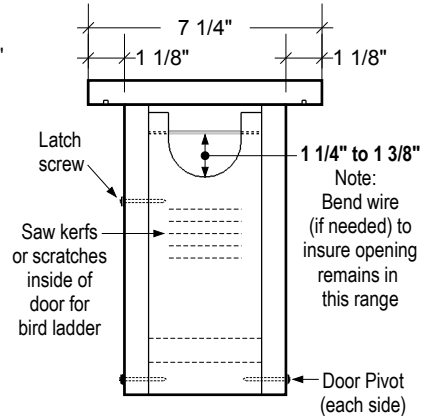
Note
For no table saw
fabrication, cut 3 1/2"
parts from 1 x 4



Saw kerfs on roof underside
1/2" in from edge x 1/8" deep

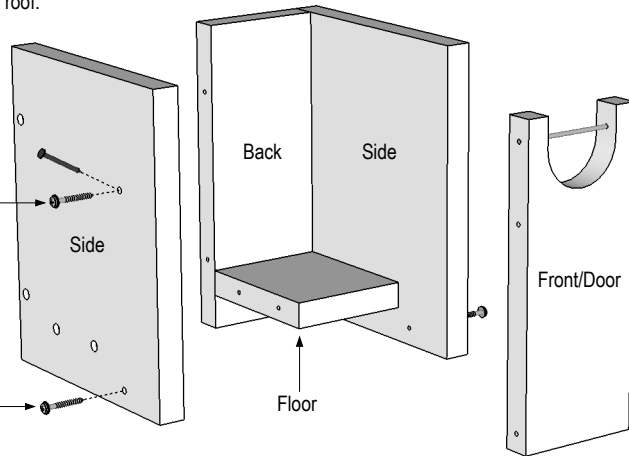
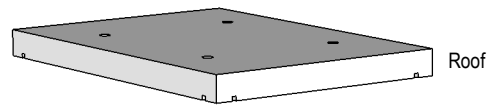


Side View

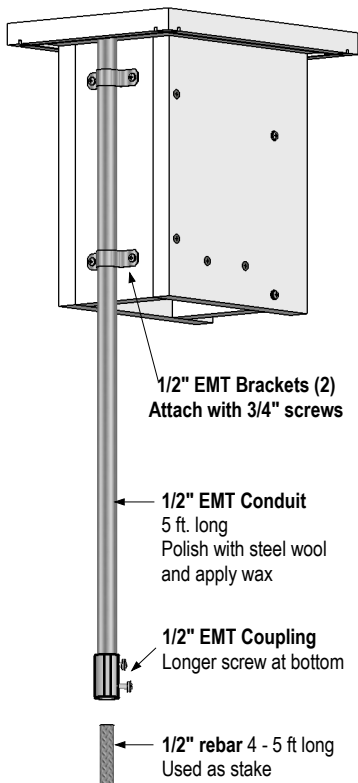


Front View

Apply caulk to top of
sides and to
top of back before
attaching roof.



**Gilbertson Conduit/Rebar
Mounting System**

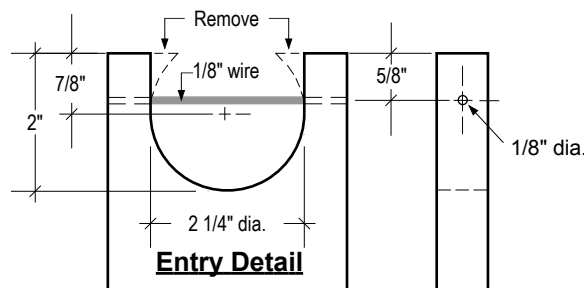


1/2" EMT Brackets (2)
Attach with 3/4" screws

1/2" EMT Conduit
5 ft. long
Polish with steel wool
and apply wax

1/2" EMT Coupling
Longer screw at bottom

1/2" rebar 4 - 5 ft long
Used as stake



Entry Detail

Quan	Material
42"	1 x 8 (3/4" x 7 1/4")
14	#8 x 1 5/8" exterior wood screws
1	#8 x 1 5/8" Latch screw (or nail)
3 1/2"	1/8" dia. wire (or nail) for entry
1	Conduit/Rebar Mounting System

Gilwood

Bluebird Nestbox

designed by Steve Gilbertson - Aitkin, Mn